

Introducing the ... **WR10**  
**Air-Operated Double Diaphragm Pump**

**APPLICATIONS:**

Car Wash Chemicals

Wash Solutions

Dispensing of:

Pigments

Inks

Paints

Additives

Sanitizers

Drum Transfer

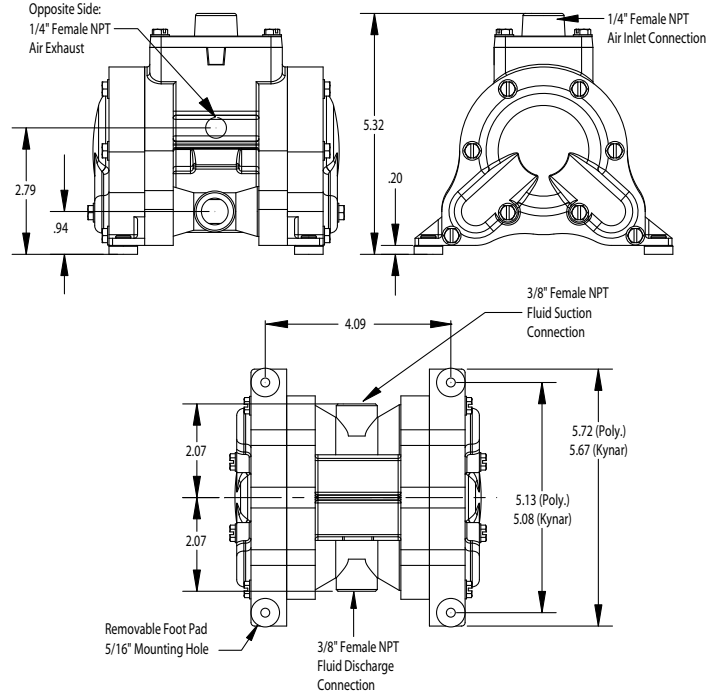
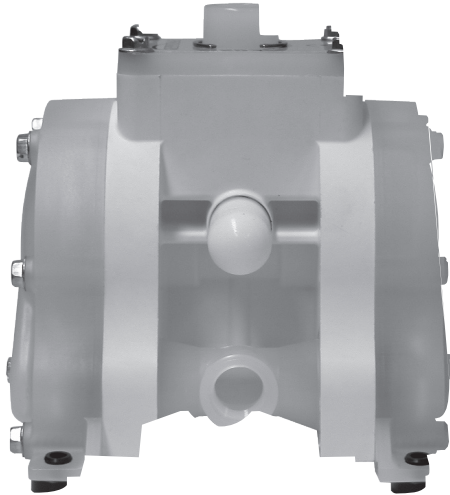
**WARREN  
RUPP®**

A Unit of **IBEX** Corporation  
800 North Main Street  
Mansfield, OH 44902 USA  
419-524-8388 • Fax: 419-522-7867

[www.warrenrupp.com](http://www.warrenrupp.com)



# WR10 3/8" AODD Pump



## BENEFITS:

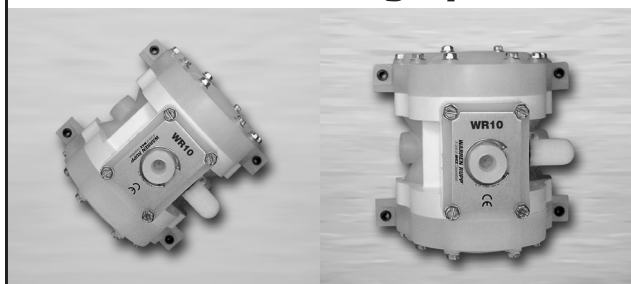
- Flows to 5 GPM (19 LPM)
- Multiple mounting positions
- Similar envelope dimensions to a standard 1/4" pump, but almost double the flow rate
- Cost competitive
- Size ideal for OEM applications
- Dependable operation

## WR10 SPECIFICATIONS

Shipping wt.	3 lbs.	1.36 kg
Max. pressure	100 psi	6.9 bar
Min. pressure	15 psi	1 bar
Max. particle size	1/16"	1.5 mm
Suction lift (dry)	16.5 ft.	5m
Suction lift (wet)	20 ft.	6m
Air inlet	1/4" NPT (f)/BSP	

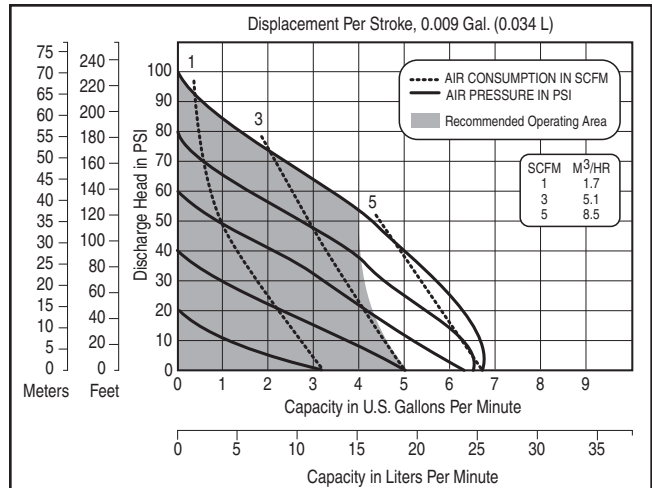
Materials: Polypropylene body with Santoprene elastomers; Polypropylene body with PTFE elastomers; Kynar body with Santoprene elastomers; Kynar body with PTFE elastomers

## Various Mounting Options



Ceiling mount

Wall mount



**WARREN  
RUPP®**