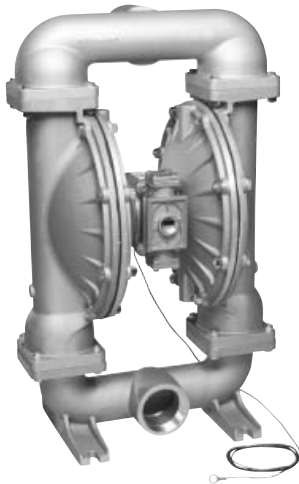


**WARREN
RUPP®**

SANDPIPER®

A WARREN RUPP PUMP BRAND



Quality System
ISO9001 Certified

Environmental
Management System
ISO14001 Certified

IDEX
FLUID & METERING



CSA Certified
to Requirement
2.01 U.S.



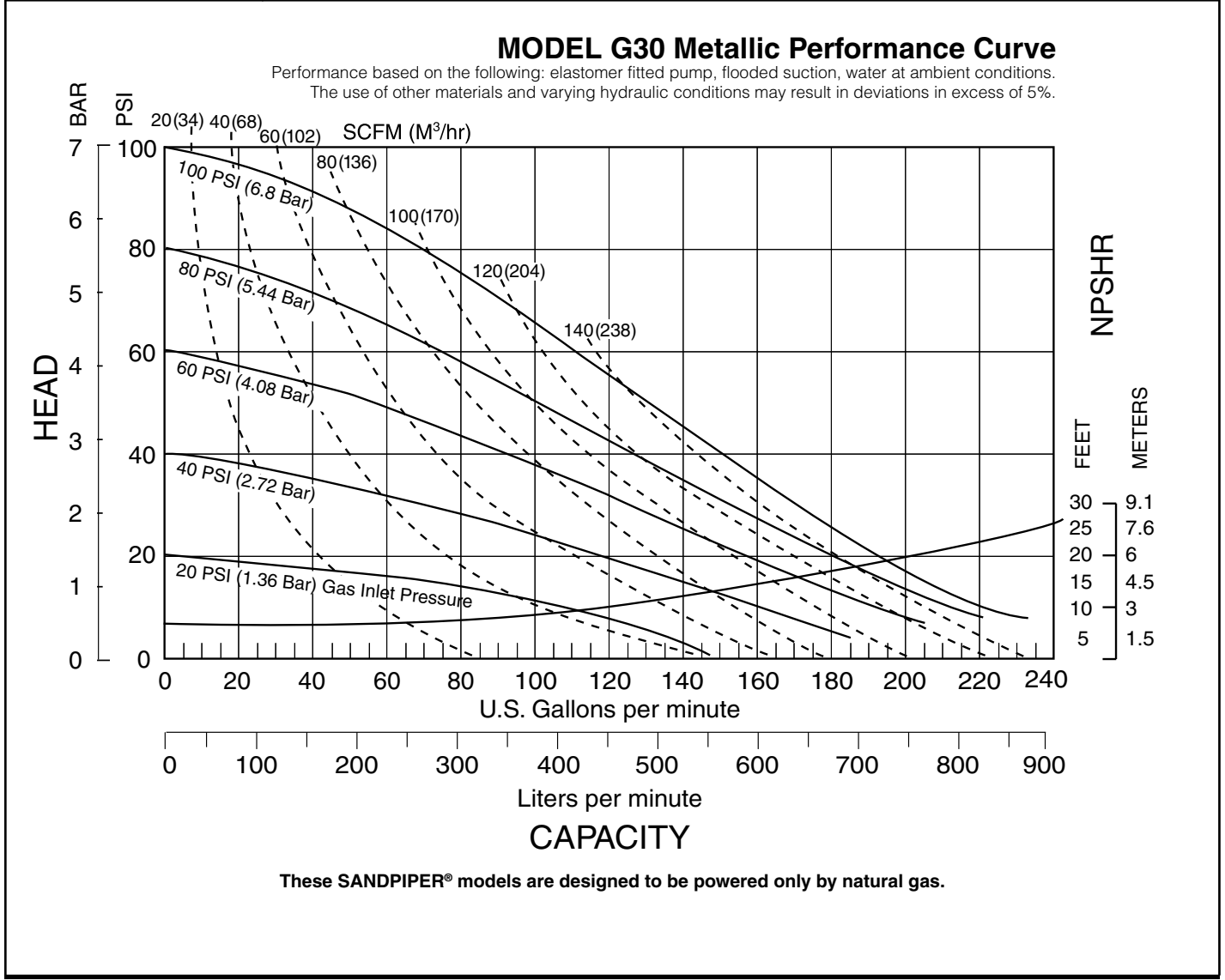
Certified to CSA
Technical Letter
No. R-14

U.S. Patent #
5,996,627; 6,241,448
Other U.S. Patents
Applied for

**G30 Metallic
Design Level 1
Ball Valve**
**Natural Gas Operated
Double Diaphragm Pump**

ENGINEERING, PERFORMANCE
& CONSTRUCTION DATA

| INTAKE/DISCHARGE PIPE SIZE | CAPACITY | AIR VALVE | SOLIDS-HANDLING | HEADS UP TO | DISPLACEMENT/STROKE |
|--|---|-----------------------------|------------------------|--|-------------------------|
| 3" NPT (internal) 3" BSP Tapered (internal) | 0 to 235 gallons per minute (0 to 889 liters per minute) | No-lube, no-stall design | Up to .38 in. (9.65mm) | 100 psi or 230.7 ft. of water (7 Kg/cm ² or 70 meters) | .94 Gallon / 3.56 liter |



Explanation of Pump Nomenclature

G30 Metallic · Design Level 1 · Ball Valve

| MODEL | Pump Brand | Pump Size | Check Valve Type | Design Level | Wetted Material | Diaphragm/Check Valve Materials | Check Valve Seat | Non-Wetted Material Options | Porting Options | Pump Style | Pump Options | Shipping Kit Options | Weight lbs. (kg) |
|-----------------|------------|-----------|------------------|--------------|-----------------|---------------------------------|------------------|-----------------------------|-----------------|------------|--------------|----------------------|------------------|
| G30B1ABBXNSX00. | G | 30 | B | 1 | A | B | B | X | N | S | X | 00. | 113 (52) |
| G30B1A5BXNSX00. | G | 30 | B | 1 | A | 5 | B | X | N | S | X | 00. | 113 (52) |
| G30B1ATTXNSX00. | G | 30 | B | 1 | A | T | T | X | N | S | X | 00. | 113 (52) |
| G30B1SBBXNSX00. | G | 30 | B | 1 | S | B | B | X | N | S | X | 00. | 194 (87) |
| G30B1S5BXNSX00. | G | 30 | B | 1 | S | 5 | B | X | N | S | X | 00. | 194 (87) |
| G30B1STTXNSX00. | G | 30 | B | 1 | S | T | T | X | N | S | X | 00. | 194 (87) |
| G30B1ABBXBSX00. | G | 30 | B | 1 | A | B | B | X | B | S | X | 00. | 113 (52) |
| G30B1ATTXBSX00. | G | 30 | B | 1 | A | T | T | X | B | S | X | 00. | 113 (52) |
| G30B1SBBXBSX00. | G | 30 | B | 1 | S | B | B | X | B | S | X | 00. | 194 (87) |
| G30B1STTXBSX00. | G | 30 | B | 1 | S | T | T | X | B | S | X | 00. | 194 (87) |

Pump Brand

G=Gas Operated

Pump Size

30=3"

Check Valve Type

B=Ball

Design Level

1=Design Level

Wetted Material

S=Stainless Steel

A=Aluminum

Diaphragm Check Ball Materials

B=Nitrile/Nitrile

T=PTFE overlay, Buna/PTFE

5=Nitrile/PTFE

Check Valve Seat

T=PTFE

B=Nitrile

A=Aluminum

S=Stainless Steel

Non-Wetted Material

X=Unpainted Aluminum

S=Stainless Steel

8=Stainless Steel/FKM Elastomers

O=Unpainted Aluminum/FKM Elastomers

Porting Options

N=NPT Threads

B=BSP (Tapered) Threads

Pump Style

S=Standard

Pump Options

X= No Muffler Permitted *

* The exhausted natural gas must be vented to a low pressure safe location in accordance with local fire safety and environmental codes, an industry or nationally recognized code having jurisdiction over the specific installations, and/or CAN/CGA B149, Installation Codes.

These pump models are designed to pump the following fluids: Crude Oil, Salt Water, Drilling Mud, Condensate, Lubrication Oils, Glycol, Caustic liquids, and Acids.

CAUTION! *Operating temperature limitations are as follows:* The minimum pump operating temperature is -10°F . The maximum pump operating temperature is 180°F

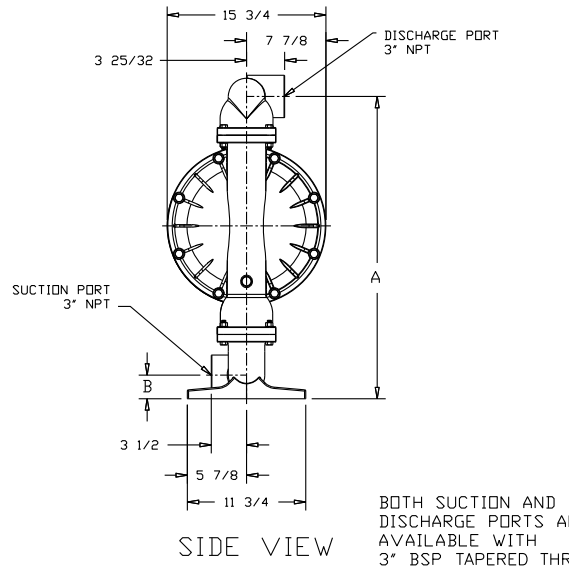
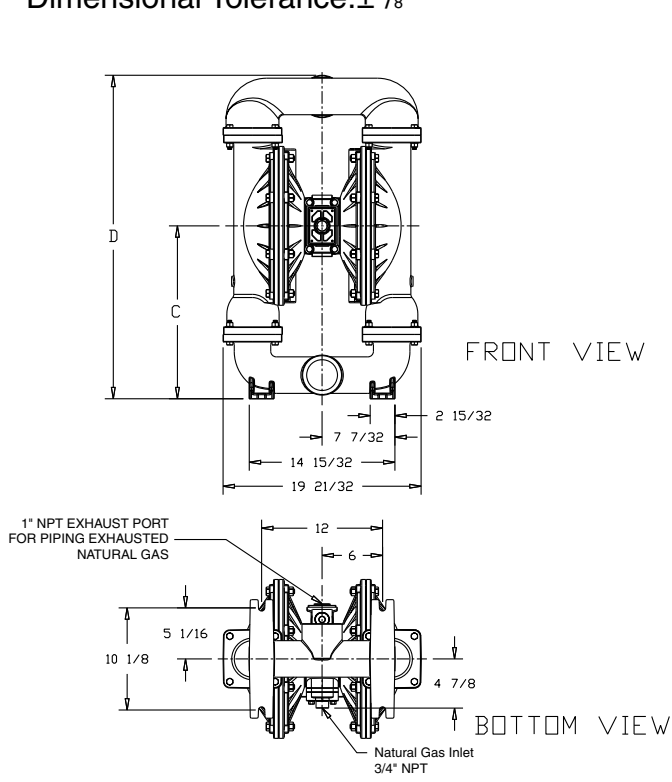
| Materials | Operating Temperatures | |
|--|------------------------|----------------|
| | Maximum | Minimum |
| Nitrile: General purpose, oil-resistant. Shows good solvent, oil, water and hydraulic fluid resistance. Should not be used with highly polar solvents like acetone and MEK, ozone, chlorinated hydrocarbons and nitro hydrocarbons. | 190°F 88°C | -10°F -23°C |
| Virgin PTFE: Chemically inert, virtually impervious. Very few chemicals are known to react chemically with PTFE: molten alkali metals, turbulent liquid or gaseous fluorine and a few fluoro-chemicals such as chlorine trifluoride or oxygen difluoride which readily liberate free fluorine at elevated temperatures. | 220°F 104°C | -35°F -37°C |
| FKM (Fluorocarbon): Excellent resistance to sour natural gas, high temperature, acids, hydrogen sulfide and oil. | 400°F 204°C | -15°F -26°C |

For specific applications, always consult "Chemical Resistance Chart" Technical Bulletin

Dimensions: G30 Metallic

Dimensions in Inches

Dimensional Tolerance: $\pm 1/8$ "

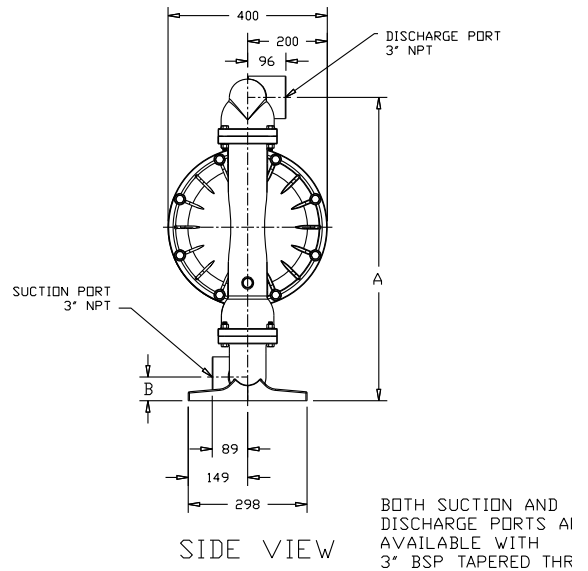
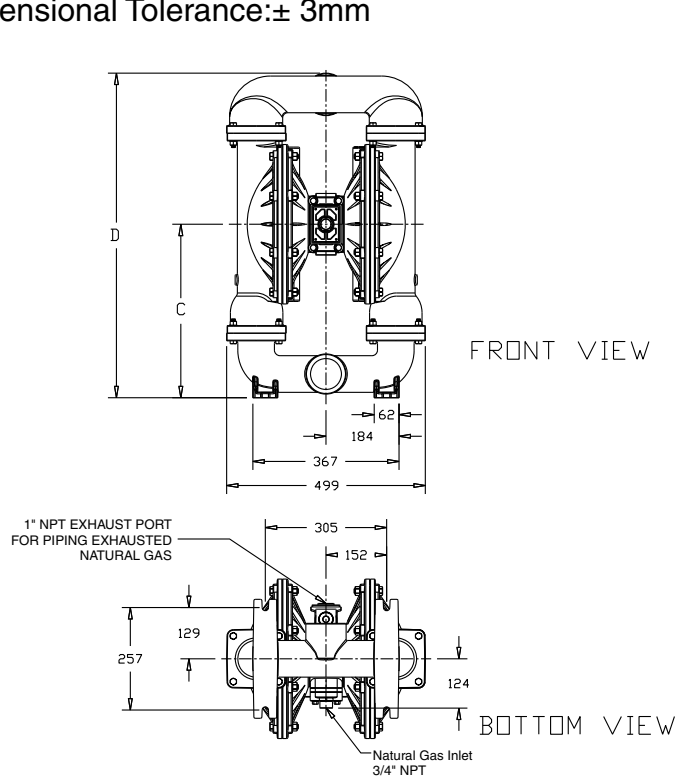


Note: The pump is to be mounted in the horizontal position.

| Dimension | A | B | C | D |
|-----------------|----------------------------------|---------------------------------|----------------------------------|---------------------------------|
| Aluminum | 29 ³¹ / ₃₂ | 2 ¹¹ / ₃₂ | 17 ⁹ / ₆₄ | 32 ¹ / ₁₆ |
| Stainless Steel | 30 ³ / ₁₆ | 2 ⁹ / ₁₆ | 17 ¹¹ / ₃₂ | 32 ⁹ / ₃₂ |

Dimensions in Millimeters

Dimensional Tolerance: ± 3 mm



Note: The pump is to be mounted in the horizontal position.

| Dimension | A | B | C | D |
|-----------------|-----|----|-----|-----|
| Aluminum | 761 | 60 | 435 | 815 |
| Stainless Steel | 767 | 66 | 441 | 821 |