

# 32T-2 Triplex Plunger Pump

## Specifications

### Pump Size:

maximum plunger size x stroke length, in.(mm):  
2.000 x 2.250 (50.8 x 57.15)

**Rated BHP (kW) at 465 RPM:** 32 (24)

**Rated plunger load, pounds (kg):** 3600 (1633)

**Maximum discharge pressure:** psi (kPa)

"L" model: 2037 (14046)

"M" model: 2565 (17685)

"H" model: 4600 (31716)

### Crankshaft extension:

Diameter, in.(mm): 2.000 (50.8)

Length, in.(mm): 3.875 (98.4)

Keyway width x depth, in.(mm):

1/2 x 1/4 (12.7 x 6.35)

Maximum recommended sheave diameter,

in.(mm): 33.5 (850.9)

For larger sizes: **Contact Factory**

### Oil Capacity, gallons (L)

Crankcase: 1-1/4 (4.73)

### Weight, pump only on

wood shipping skids, pounds (kg): 395 (179)

### Standard Materials for Fluid Ends:

"L" & "M" models

Cast Ductile Iron

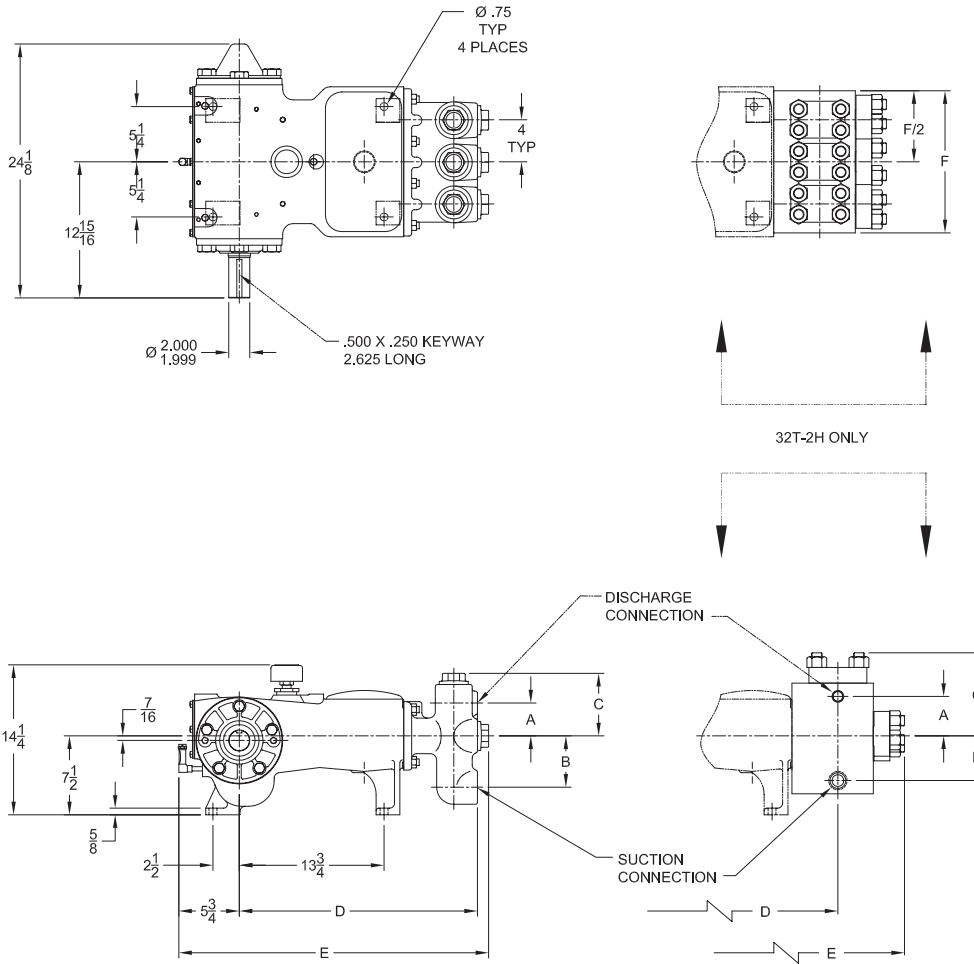
Cast Nickel-Aluminum-Bronze

Cast 316 Stainless Steel

Forged/Plate Carbon Steel

"H" model

Forged 15-5 Stainless Steel



| Pump Model | Flange Connections         |                          | Dimensions (Inches) |       |         |        |        |        |  |
|------------|----------------------------|--------------------------|---------------------|-------|---------|--------|--------|--------|--|
|            | Discharge Connection Sizes | Suction Connection Sizes | A                   | B     | C       | D      | E      | F      |  |
| 32T-2L     | 1 (25.4)-11 1/2 NPT        | 2 (50.8)-11 1/2 NPT      | 3 3/8               | 4 7/8 | 5 15/16 | 22 5/8 | 29 1/2 | 11 1/2 |  |
| 32T-2M     | 1 (25.4)-11 1/2 NPT        | 2 (50.8)-11 1/2 NPT      | 3 1/8               | 4 7/8 | 5 15/16 | 22 5/8 | 29 1/2 | 11 1/2 |  |
| 32T-2H     | 3/4 (19.1)-14 NPT          | 1 1/4 (31.8)-11 1/2 NPT  | 3 3/4               | 4 1/4 | 7 7/8   | 20     | 32 1/8 | 13 1/2 |  |

# 32T-2 Triplex Plunger Pump

## Performance Data

| PUMP                      | English Units    |                      |             |             |                 | 50 RPM |      | 150 RPM |      | 200 RPM |      | 250 RPM |      | 350 RPM |      | 465 RPM |      |
|---------------------------|------------------|----------------------|-------------|-------------|-----------------|--------|------|---------|------|---------|------|---------|------|---------|------|---------|------|
|                           | Plunger Dia. In. | Plunger Area Sq. In. | BPD per RPM | GPM per RPM | Max. Press. PSI | BPD    | GPM  | BPD     | GPM  | BPD     | GPM  | BPD     | GPM  | BPD     | GPM  | BPD     | GPM  |
| 32T-2L<br>(T225LS)        | 2.000            | 3.1416               | 3.1474      | 0.0918      | 1146            | 158    | 4.59 | 473     | 13.8 | 630     | 18.4 | 787     | 22.9 | 1102    | 32.1 | 1464    | 42.7 |
|                           | 1.875            | 2.7612               | 2.7663      | 0.0807      | 1304            | 139    | 4.03 | 415     | 12.1 | 554     | 16.1 | 692     | 20.2 | 969     | 28.2 | 1287    | 37.5 |
|                           | 1.750            | 2.4053               | 2.4097      | 0.0703      | 1497            | 121    | 3.51 | 362     | 10.5 | 482     | 14.1 | 603     | 17.6 | 844     | 24.6 | 1121    | 32.7 |
|                           | 1.625            | 2.0739               | 2.0778      | 0.0606      | 1736            | 104    | 3.03 | 312     | 9.1  | 416     | 12.1 | 520     | 15.2 | 728     | 21.2 | 967     | 28.2 |
|                           | 1.500            | 1.7671               | 1.7704      | 0.0516      | 2037            | 89     | 2.58 | 266     | 7.7  | 355     | 10.3 | 443     | 12.9 | 620     | 18.1 | 824     | 24.0 |
| 32T-2M<br>(T225M)         | 1.750            | 2.4053               | 2.4097      | 0.0703      | 1497            | 121    | 3.51 | 362     | 10.5 | 482     | 14.1 | 603     | 17.6 | 844     | 24.6 | 1121    | 32.7 |
|                           | 1.625            | 2.0739               | 2.0778      | 0.0606      | 1736            | 104    | 3.03 | 312     | 9.09 | 416     | 12.1 | 520     | 15.2 | 728     | 21.2 | 967     | 28.2 |
|                           | 1.500            | 1.7671               | 1.7704      | 0.0516      | 2037            | 89     | 2.58 | 266     | 7.75 | 355     | 10.3 | 443     | 12.9 | 620     | 18.1 | 824     | 24.0 |
|                           | 1.375            | 1.4849               | 1.4876      | 0.0434      | 2424            | 75     | 2.17 | 224     | 6.51 | 298     | 8.68 | 372     | 10.8 | 521     | 15.2 | 692     | 20.2 |
|                           | 1.250            | 1.2272               | 1.2295      | 0.0359      | 2565            | 62     | 1.79 | 185     | 5.38 | 246     | 7.17 | 308     | 8.96 | 431     | 12.6 | 572     | 16.7 |
| 32T-2H<br>(T225H)         | 1.000            | 0.7854               | 0.7869      | 0.0229      | 4584            | 40     | 1.15 | 119     | 3.44 | 158     | 4.59 | 197     | 5.74 | 276     | 8.03 | 366     | 10.7 |
|                           | 0.875            | 0.6013               | 0.6024      | 0.0176      | 4600            | 31     | 0.88 | 91      | 2.64 | 121     | 3.51 | 151     | 4.39 | 211     | 6.15 | 281     | 8.17 |
|                           | 0.750            | 0.4418               | 0.4426      | 0.0129      | 4600            | 23     | 0.65 | 67      | 1.94 | 89      | 2.58 | 111     | 3.23 | 155     | 4.52 | 206     | 6.00 |
| Brake Horsepower Required |                  |                      |             |             |                 | 3.4    |      | 10.2    |      | 13.6    |      | 17      |      | 24      |      | 32      |      |

| PUMP               | Metric Units    |                              |                            |                |                 | 50 RPM             |        | 150 RPM            |        | 200 RPM            |        | 250 RPM            |        | 350 RPM            |        | 465 RPM            |        |
|--------------------|-----------------|------------------------------|----------------------------|----------------|-----------------|--------------------|--------|--------------------|--------|--------------------|--------|--------------------|--------|--------------------|--------|--------------------|--------|
|                    | Plunger Dia. cm | Plunger Area cm <sup>2</sup> | M <sup>3</sup> /Hr per RPM | L/Sec. per RPM | Max. Press. kPa | M <sup>3</sup> /Hr | L/Sec. | M <sup>3</sup> /Hr | L/Sec. | M <sup>3</sup> /Hr | L/Sec. | M <sup>3</sup> /Hr | L/Sec. | M <sup>3</sup> /Hr | L/Sec. | M <sup>3</sup> /Hr | L/Sec. |
| 32T-2L<br>(T225LS) | 51              | 20.268                       | 0.0208                     | 0.0058         | 7901            | 1.04               | 0.29   | 3.13               | 0.87   | 4.17               | 1.16   | 5.21               | 1.45   | 7.30               | 2.03   | 9.69               | 2.69   |
|                    | 48              | 17.814                       | 0.0183                     | 0.0051         | 8989            | 0.92               | 0.25   | 2.75               | 0.76   | 3.66               | 1.02   | 4.58               | 1.27   | 6.41               | 1.78   | 8.52               | 2.37   |
|                    | 44              | 15.518                       | 0.0160                     | 0.0044         | 10319           | 0.80               | 0.22   | 2.39               | 0.67   | 3.19               | 0.89   | 3.99               | 1.11   | 5.59               | 1.55   | 7.42               | 2.06   |
|                    | 41              | 13.380                       | 0.0138                     | 0.0038         | 11968           | 0.69               | 0.19   | 2.06               | 0.57   | 2.75               | 0.76   | 3.44               | 0.96   | 4.82               | 1.34   | 6.40               | 1.78   |
| 32T-2M<br>(T225M)  | 38              | 11.401                       | 0.0117                     | 0.0033         | 14046           | 0.59               | 0.16   | 1.76               | 0.49   | 2.35               | 0.65   | 2.93               | 0.81   | 4.10               | 1.14   | 5.45               | 1.51   |
|                    | 44              | 15.518                       | 0.0160                     | 0.0044         | 10319           | 0.80               | 0.22   | 2.39               | 0.67   | 3.19               | 0.89   | 3.99               | 1.11   | 5.59               | 1.55   | 7.42               | 2.06   |
|                    | 41              | 13.380                       | 0.0138                     | 0.0038         | 11968           | 0.69               | 0.19   | 2.06               | 0.57   | 2.75               | 0.76   | 3.44               | 0.96   | 4.82               | 1.34   | 6.40               | 1.78   |
|                    | 38              | 11.401                       | 0.0117                     | 0.0033         | 14046           | 0.59               | 0.16   | 1.76               | 0.49   | 2.35               | 0.65   | 2.93               | 0.81   | 4.10               | 1.14   | 5.45               | 1.51   |
|                    | 35              | 9.580                        | 0.0099                     | 0.0027         | 16716           | 0.49               | 0.14   | 1.48               | 0.41   | 1.97               | 0.55   | 2.46               | 0.68   | 3.45               | 0.96   | 4.58               | 1.27   |
| 32T-2H<br>(T225H)  | 32              | 7.917                        | 0.0081                     | 0.0023         | 17685           | 0.41               | 0.11   | 1.22               | 0.34   | 1.63               | 0.45   | 2.04               | 0.57   | 2.85               | 0.79   | 3.79               | 1.05   |
|                    | 29              | 6.413                        | 0.0066                     | 0.0018         | 17685           | 0.33               | 0.09   | 0.99               | 0.27   | 1.32               | 0.37   | 1.65               | 0.46   | 2.31               | 0.64   | 3.07               | 0.85   |
|                    | 25              | 5.067                        | 0.0052                     | 0.0014         | 31603           | 0.26               | 0.07   | 0.78               | 0.22   | 1.04               | 0.29   | 1.30               | 0.36   | 1.82               | 0.51   | 2.42               | 0.67   |
|                    | 22              | 3.879                        | 0.0040                     | 0.0011         | 31716           | 0.20               | 0.06   | 0.60               | 0.17   | 0.80               | 0.22   | 1.00               | 0.28   | 1.40               | 0.39   | 1.86               | 0.52   |
|                    | 19              | 2.850                        | 0.0029                     | 0.0008         | 31716           | 0.15               | 0.04   | 0.44               | 0.12   | 0.59               | 0.16   | 0.73               | 0.20   | 1.03               | 0.29   | 1.36               | 0.38   |
| Kilowatts Required |                 |                              |                            |                |                 | 2.5                |        | 7.6                |        | 10.2               |        | 12.7               |        | 18                 |        | 24                 |        |

For operation below 75 RPM, an auxiliary lubrication system is required.

Volumetric Rate is based on 100% Volumetric Efficiency. Brake Horsepower/Kilowatts Required is based on 90% Mechanical Efficiency.

The information and data on this sheet is accurate to the best of our knowledge and belief, but are intended for general information only. Applications suggested for the materials are described only to help readers make their own evaluations and decisions, and are neither guarantees nor to be construed as express or implied warranties of suitability for these or other applications. National Oilwell makes no warranty either express or implied beyond that stipulated in National Oilwell Standard Terms and Conditions of Sale.

Authorized Distributor:



www.nov.com • mission.sales@nov.com  
 10000 Richmond, Houston, Texas 77042  
 (713)346-7500 (phone) • (713)346-7366 (fax)